

**ION** BY IMPACT



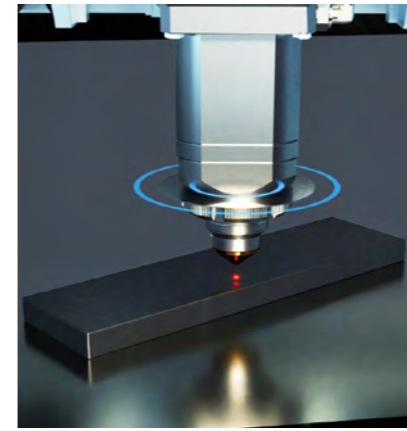
**SET THE STANDARD OF  
EXCELLENCE**

## FULL COVER FIBER LASER CUTTING MACHINE

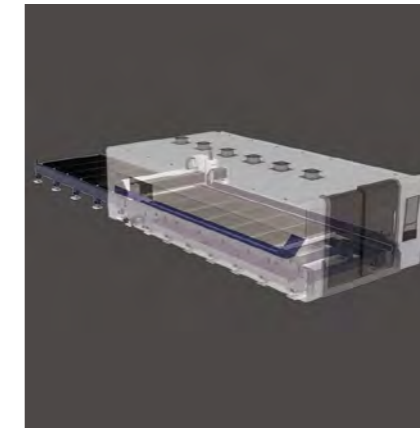


Efficient and high-quality cutting of various metal plates

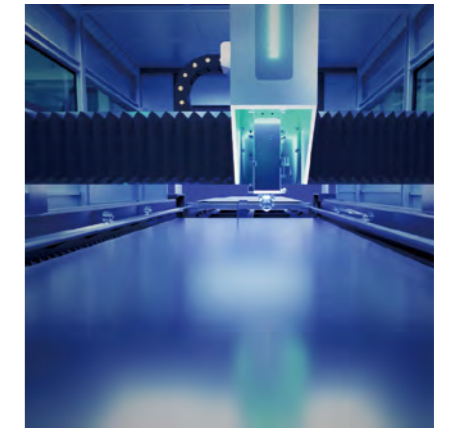
- Safe and clean production
- Zoned smoke exhaust system
- High speed double platforms exchanging



Avoid Collision in Travel



Fully Enclosed Design



Ultra Large Cutting Area

### Performance advantages

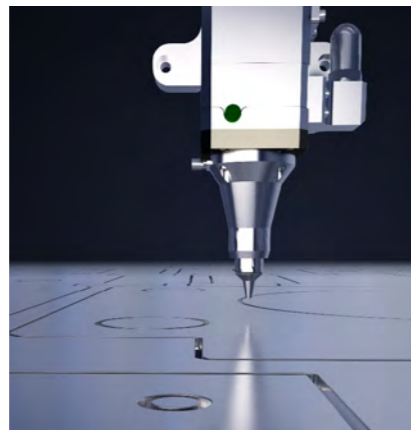
- A fully enclosed structure with state-of-the-art dust removal system, every detail promises a safe and pollution-free environment;
- Each heavy-duty strengthened burn-proof manganese steel sheet welding bed goes through 600°C high temperature annealing, vibration aging and natural aging, ensuring long period and stable operation;
- Top-notch servo drive systems allow high accuracy, fast speed cutting and stable operation;
- Intuitive operation system with touch control simplifies your laser cutting process, delivering a compatible, flexible and efficient processing;
- World-class laser ensures stable light output and low electricity consumption;
- An Intelligent cutting head brings the highest quality and productivity, cutting speed increased by up to 25%. Built-in sensors facilitate regular maintenance and effective usage of spare parts.

### Machine parameters

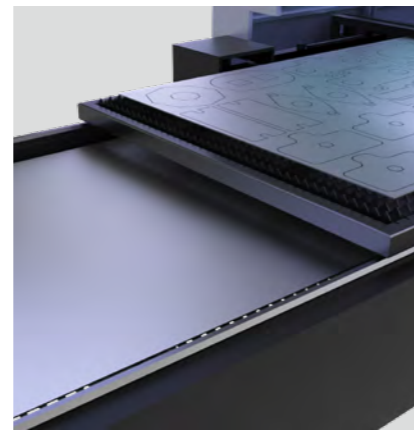
Model	MT-L1530FH	MT-L2040FH	MT-L2560FH	MT-L20120FH	MT-L25120FH
Cutting Area(Customizable)	3000*1500mm	4000*2000mm	6000*2500mm	12000*2000mm	12000*2500mm
Laser Power	1000W-60000W				



Intelligence Control System



Auto Focus Laser Head



Exchange Table

## Performance advantages

- With an integrated design, no disassembly is needed for delivery, and it can be directly put into a container, saving shipping cost;
- Dual pallets exchange keeps your production flowing smoothly and efficiently with low operating cost;
- Intelligent cutting head can automatically focus quickly and accurately when cutting, which makes cutting easier and helps improve work efficiency;
- Equipped with observation window and intelligent monitoring system, real-time monitoring of production process to ensure production safety;
- The working bed is annealed at high temperature to eliminate the stress caused by welding, achieve better shock absorption effect, and effectively reduce the error caused by vibration during cutting.

## Machine parameters

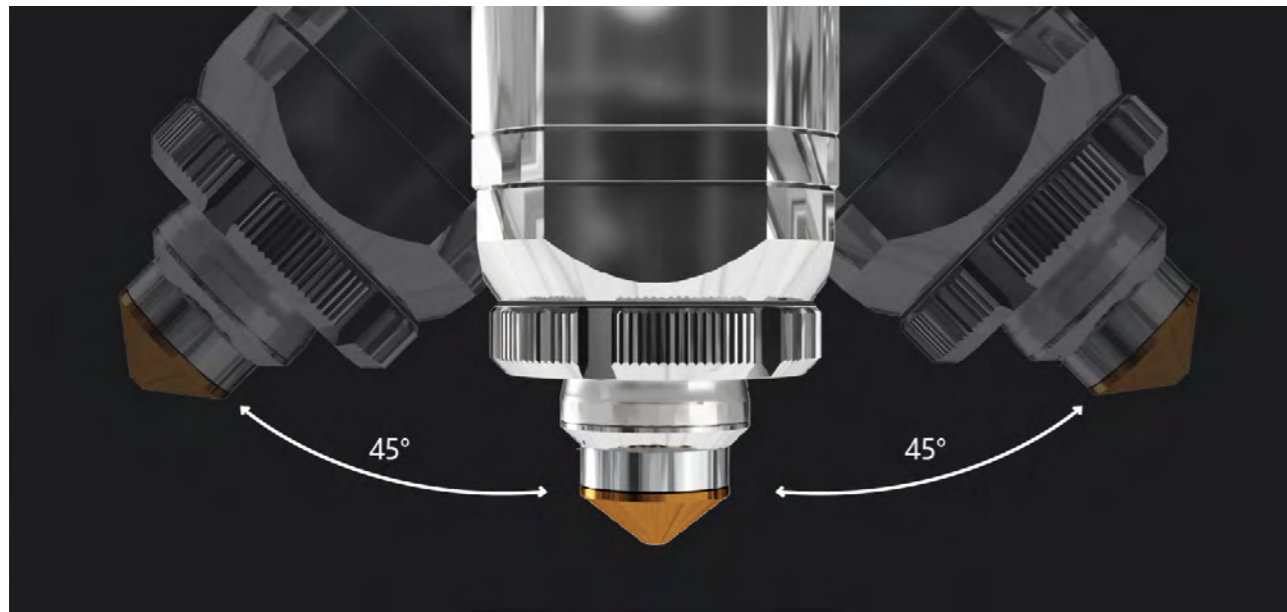
Model	MT-L1530FH
Cutting Area	3000*1500mm
Laser Power	1000W-60000W

## FULL ENCLOSED FIBER LASER CUTTING MACHINE



Integrated design saves installation time and shipping costs

- Stable output
- Cost saving
- Safe production



Make Perfect Bevel in One-time

### Performance advantages

- Make bevel cuts in just one shot with angle within 0-45°;
- Super high power cutting head equipped with intelligent control system, greatly reduce production cost;
- Triangular crossbeam strengthens machine stability;
- Each heavy-duty strengthened burn-proof manganese steel sheet welding bed goes through 600°C high temperature annealing, vibration aging and natural aging, ensuring long period and stable operation;
- World-class laser ensures stable light output and low electricity consumption.

### Machine parameters

Model	MT-L1530F MT-L2040F MT-L2560F MT-L20120F MT-L25120F MT-L31140F
Cutting Area(Customizable)	3000*1500mm 4000*2000mm 6000*2500mm 12000*2000mm 12000*2500mm 14000*3100mm
Laser Power	2000W-60000W
Bevel angle	±45° (Expandable)

## BEVEL LASER CUTTING MACHINE



X-type, Y-type, V-type bevels formed in one shot

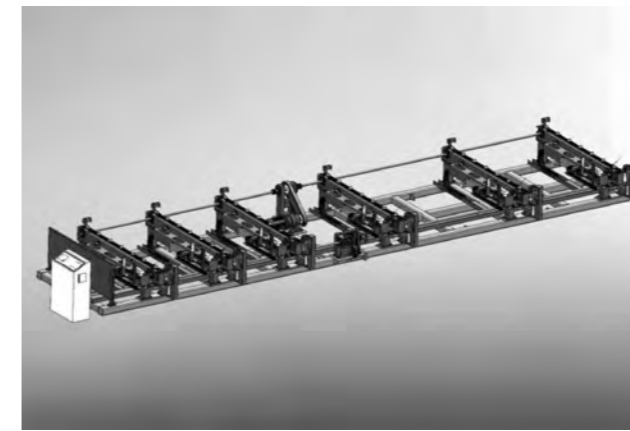
- Improve efficiency by 75%
- Precision processing
- One-shot bevel

## HEAVY DUTY TUBE LASER CUTTING MACHINE

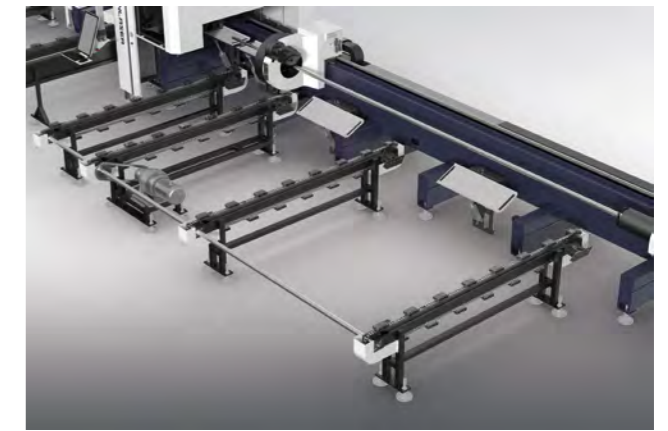


Accurately cut square tubes, round tubes, special-shaped tubes

- **Intelligent 4-chuck technology**
- **Truly zero tailing**
- **Auto loading and unloading system**



Automatic Loading System



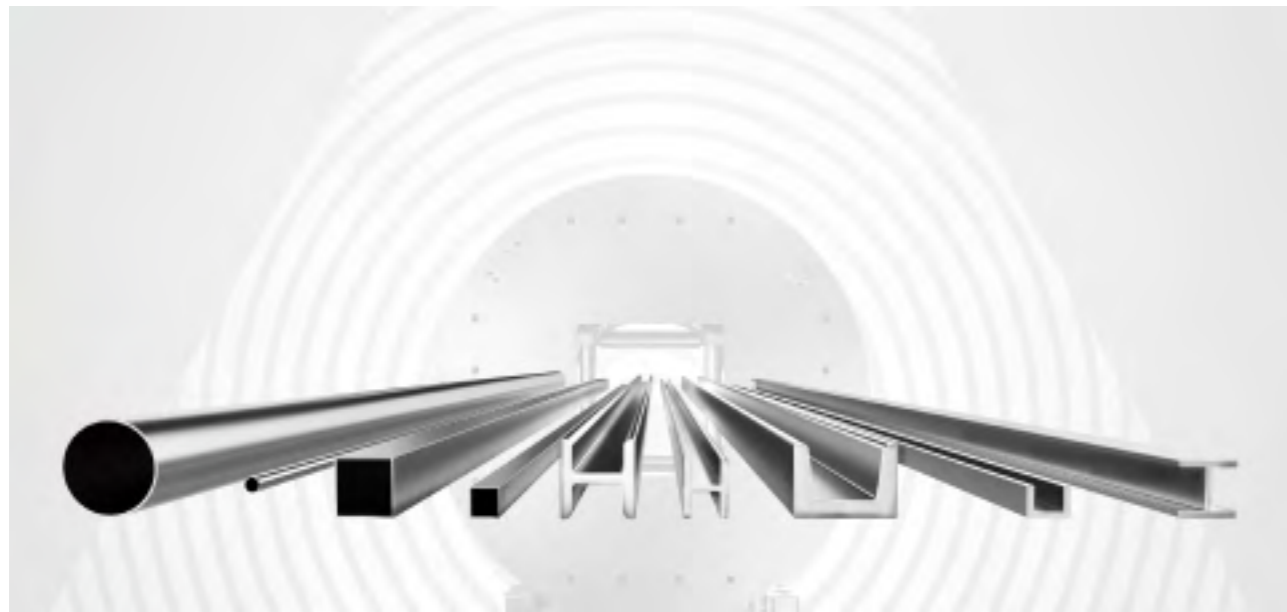
Automatic Unloading System

### Performance advantages

- Innovative four-chuck design features large clamping force to easily and stably clamp heavy duty and long tubes;
- Pneumatic roller supports avoid deformation of the long tube during cutting operation;
- Multi-clamping modes enables zero tailing of tube cutting, improving material utilization rate and saving costs;
- One-click cutting resume at breakpoint after power failure;
- Automatic loading and unloading mechanisms guarantee powerful efficiency.

### Machine parameters

Model	MT-6000
Laser Power	1000W-12000W
Max.Linkage Speed	80m/min
Tube Diameter	φ20mm-160mm/200mm/350mm/500mm/1000mm
Tube Length	Standard 6m/9m/12m
Max. Acceleration Speed	0.8G



Wide Range of Processing Capacity

## Performance advantages

- Strong clamping ability for over-size tubes, effectively clamping square tubes, round tubes, waist tubes, D-shaped tubes, hexagonal tubes and other special-shaped tube;
- Helical gear transmission delivers higher transmission efficiency with hardly any noise;
- Automatic feeding device avoids deformation during the cutting of long tubes, ensuring tube cutting stability;
- Innovative three-chuck clamping automatically adjusts the clamping force according to the sizes of the tubes to avoid deformation of the tube, improving stability, efficiency, and relieving labor intensity;
- Automatic loading and unloading mechanisms guarantee powerful efficiency.

## Machine parameters

Model	MT-6000
laser Power	1000W-12000W
Max.Linkage Speed	80m/min
Tube Diameter	φ20mm-160mm/200mm/350mm/500mm
Tube Length	Standard 6m/9m/12m
Max. Acceleration Speed	0.8G

## THREE-CHUCK TUBE FIBER LASER CUTTING MACHINE



Accurately cut square tubes, round tubes, special-shaped tubes

- Innovative 3-chuck technology
- One-click clamping technology
- Extremely short tailing

## SIDE-MOUNTED LASER TUBE CUTTING MACHINE



Accurately cut square tubes, round tubes, special-shaped tubes

- High cost performance
- high precision
- fast speed



Quick Align



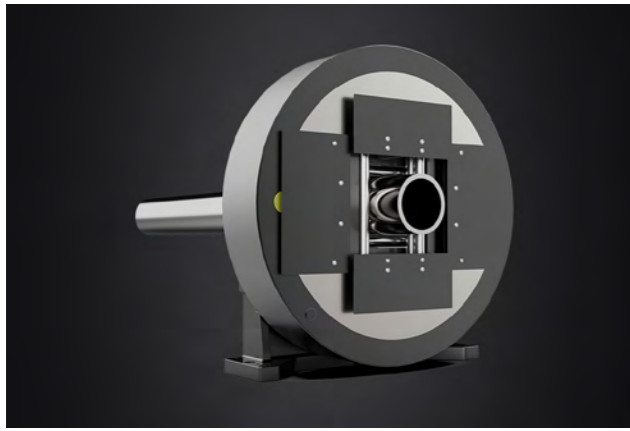
Following Holder

### Performance advantages

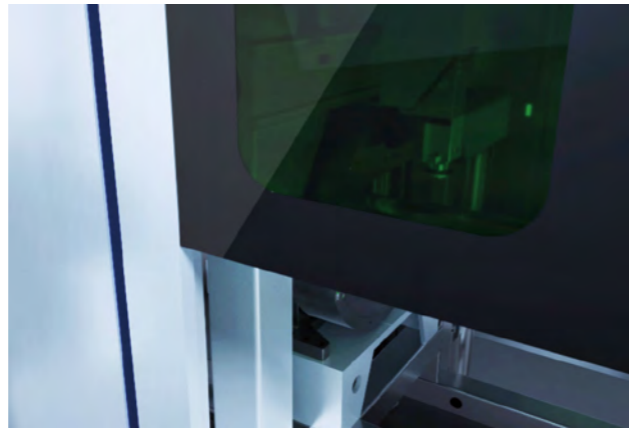
- Economical and practical, simple structure, low failure rate, easy to operate and learn;
- With super large tube diameter and strong clamping ability, it can effectively clamp and cut metal tubes such as square tubes, round tubes, D-shaped tubes, hexagonal pipes, etc;
- Automatic loading system is optional, saving labor;
- Automatic support device solves the deformation problem during long tube cutting;
- Helical gear transmission, higher transmission efficiency and no noise.

### Machine parameters

Model	MT-6000 MT-9000 MT-12000
Laser Power	1000W-12000W
Max.Linkage Speed	70m/min
Tube Diameter	φ20mm-160mm/200mm/350mm/500mm
Tube Length (Customizable)	Standard 6m/9m/12m
Max. Acceleration Speed	0.8G



Pneumatic Self-Centering Chuck



Safe and Clean Cutting Environment

## Performance advantages

- Affordable with high cutting precision and stable performance;
- One-click cutting resume at breakpoint after power failure;
- The intelligent system automatically adjusts the clamping force according to different pipe diameters and thicknesses;
- The automatic material support device ensures no deformation of long pipes during the cutting operation ;
- Helical gear transmission brings higher transmission efficiency;
- Bevel configuration is optional. Different types of groove forming once, which improves the efficiency by 75%.

## Machine parameters

Model	MT-6000
Laser Power	1000W-12000W
Max.Linkage Speed	80m/min
Tube Diameter	φ20mm-160mm/200mm/350mm/500mm
Tube Length (Customizable)	Standard 6m/9m/12m
Max. Acceleration Speed	0.8G

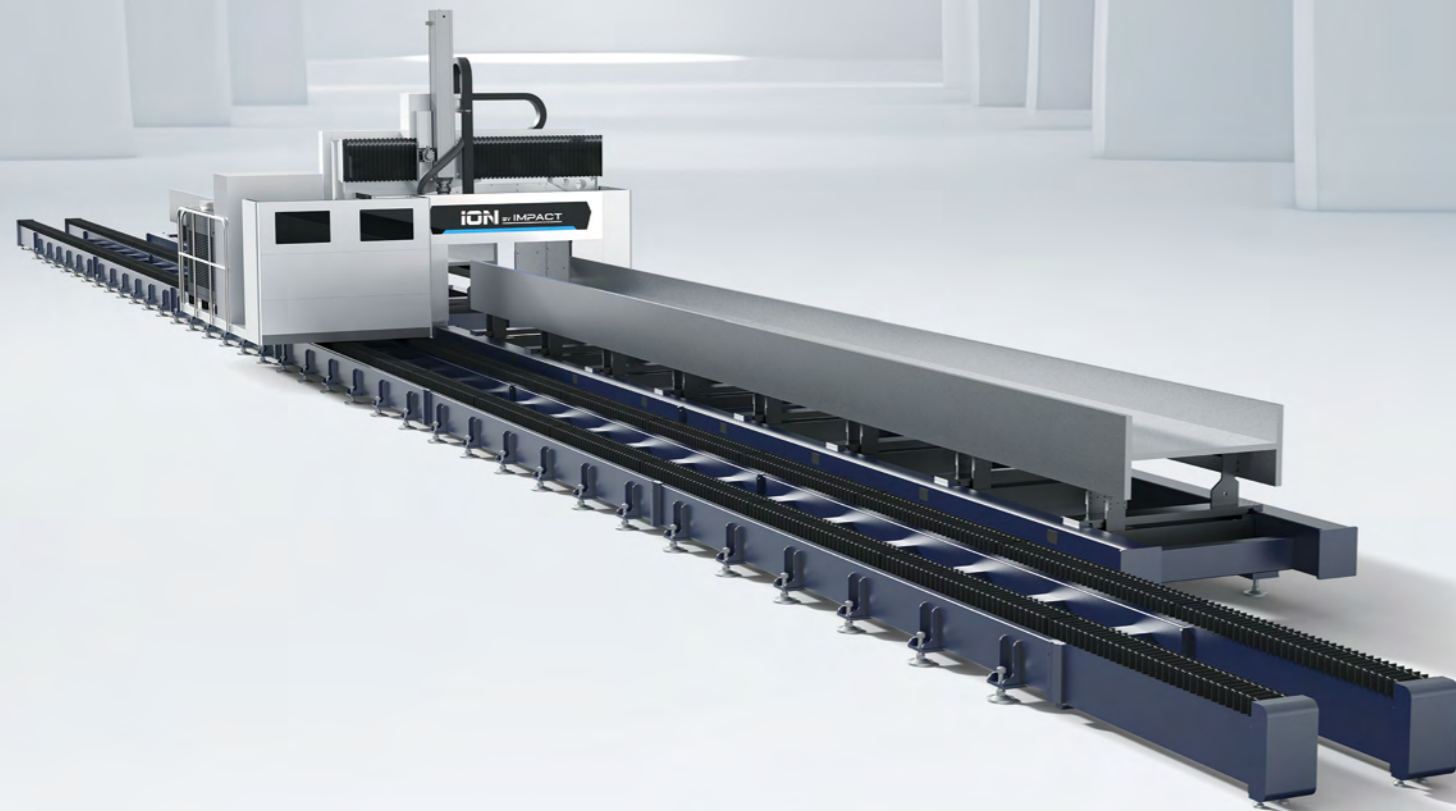
## TUBE LASER CUTTING MACHINE



Accurately cut square tubes, round tubes

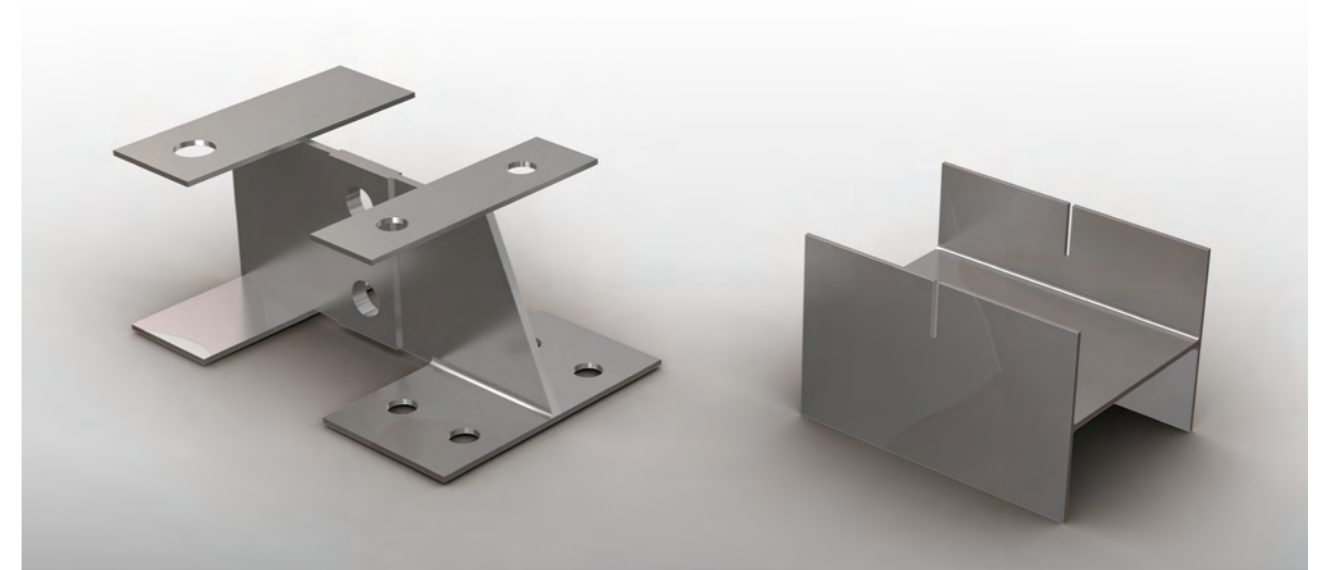
- Stable clamping
- High precision
- Cost-effective

## PROFILE STEEL LASER CUTTING MACHINE



One-stop laser solution for the steel structure industry

- Stable cutting of large-size profile steel
- High-precision bevel cutting



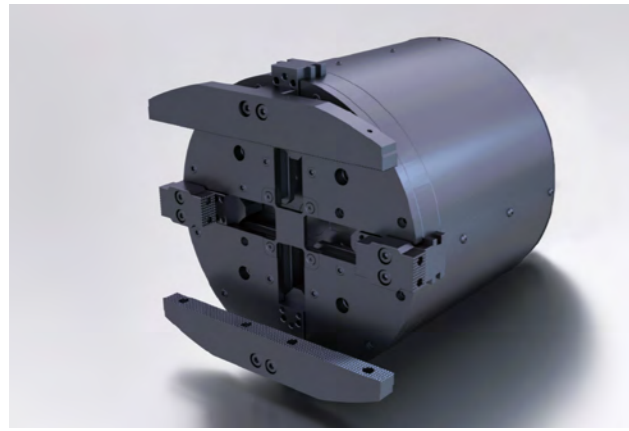
Wide processing range and rich technology

### Performance advantages

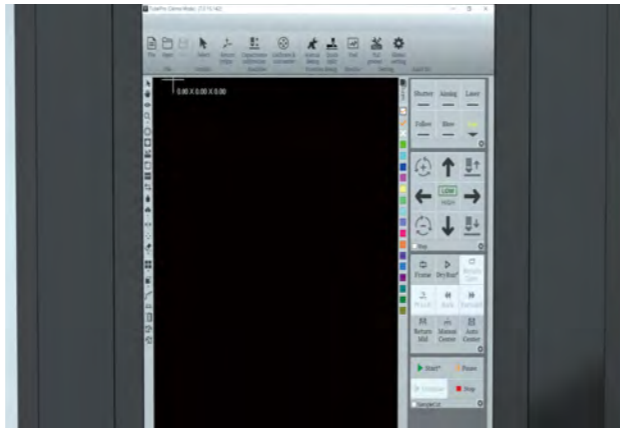
- Developed specifically for efficient cutting of I-beams, channel steels and other profile steels. The cutting range, metal size and load-bearing capacity have been greatly improved;
- It can automatically apply different materials and thicknesses according to user settings and match different process parameters;
- It can realize marking, web piercing, overlaid hole cutting, bevel cutting, cutoff and other processes;
- Cutting parameters can be adjusted in real time during the cutting process, supporting workpieces surface height tracking control,  $\pm 45^\circ$  bevel cutting, switching between multiple cutting modes, and switching between various perforation methods.

### Machine parameters

Model	MT-L25120F MT-L25240F MT-L31140F MT-L31160F
Laser Power	12000W / 200000W
X/Y-axis Repositioning Accuracy	$\pm 0.05$ mm



Pneumatic Self-Centering Chuck



Intelligence Control System

## Performance advantages

- Cut both plates and tubes to meet diversified processing needs, cost-saving and high performance;
- The unique bed structure improves machine stability and processing accuracy, effectively reducing the error due to vibrations in processing;
- Ultra-high tensile aviation aluminum beam presents better dynamic performance than its counterparts on the market;
- Durable pneumatic chuck enables high clamping accuracy, strong clamping force and stable performance.

## Machine parameters

Model	MT-L1530FR	MT-L2040FR	MT-L2560FR
Cutting Area(Customizable)	3000*1500mm	4000*2000mm	6000*2500mm
Laser Power	2000W-60000W		
Tube Diameter	φ20mm-φ350mm		
Repeat Positioning Accuracy	±0.02mm		
Maximum Acceleration Speed	1.5G		

## SHEET AND TUBE FIBER LASER CUTTING MACHINE



One machine for dual use, best for diversified processing needs

- Space-saving
- Dual-use
- Supreme cost-effectiveness

## INTEGRATED HANDHELD LASER WELDING MACHINE

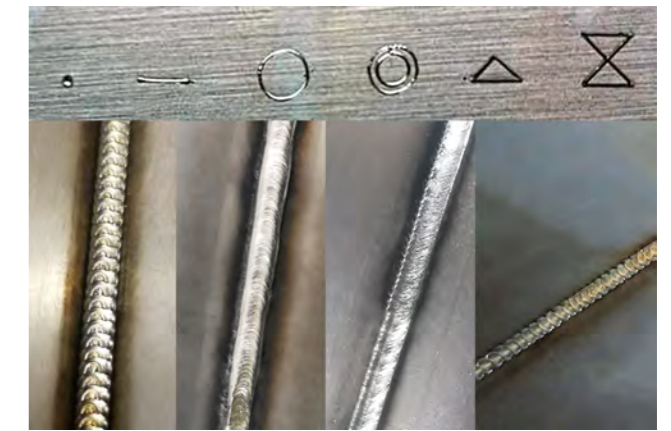


Fillet welding, vertical welding, butt welding, overlap welding, wire feed welding

- **Strong welding strength**
- **Super efficiency**
- **Easy to move**



Weld objects of various sizes anytime, anywhere



Realize a variety of light output modes such as point, line, circle, triangle and so on.

### Performance advantages

- Maximum welding of 5mm metal sheets with freely adjustable light spot;
- Sheet welding speed of reach 10m/min, 5-10 times faster than traditional argon arc welding;
- Ultra low power consumption;
- No consumables required for narrow welds;
- Super easy to operate, 10 minutes to master;
- High safety with no radiation, the light comes out only when it touches metals;
- Long lifespan up to 100,000 hours.

### Machine parameters

Model	MT-W1000P	MT-W1500P	MT-W2000P	MT-W3000P
Laser Power	1000W-3000W			
Laser Head	Handheld type			
Laser Wavelength	1080±5nm			
Spot Size	φ0.1-5mm			
Melting Depth	1-3mm			



Touch screen operating system



Double efficiency, Effortless Welding

## Performance advantages

- No need a external water-cooling device, which not only simplifies setup and maintenance but also enhances workspace portability and flexibility.
- Super easy to operate, 10 minutes to master;
- Smooth and consistent welding results require no subsequent processing;
- Multiple welding nozzles satisfy diverse welding applications including spot welding, butt welding, overlap welding, vertical welding, flat welding and fillet welding;
- Super easy to operate, 10 minutes to master;
- Long lifespan up to 100,000 hours.

## Machine parameters

Model	MT-W1500P
Laser Power	1200W
Output power tunability(%)	10-100%
Laser Head	Handheld type

## AIR-COOLED HANDHELD LASER WELDING MACHINE



Air cooling, energy saving and power saving

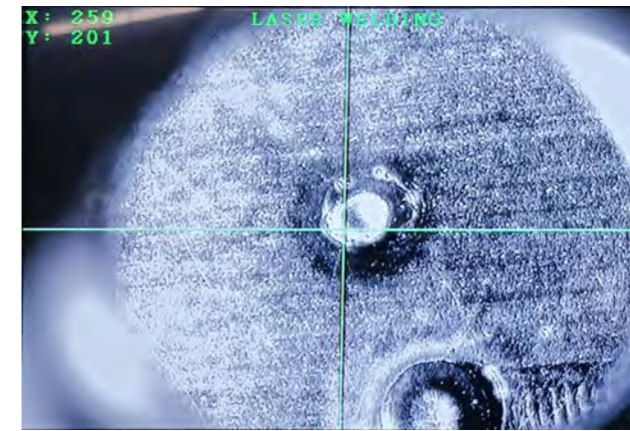
- **More flexibility**
- **Easy to use**
- **Cost effective**

## AUTOMATIC LASER WELDING MACHINE

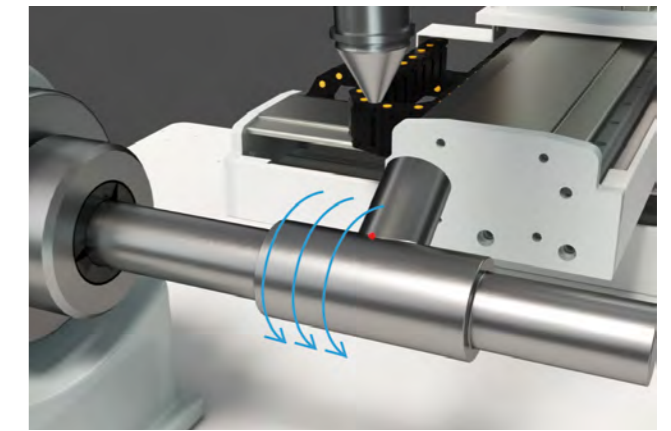


Precision welding of electronic components, battery aluminum shells, connectors, hardware accessories, kettles, sinks, etc.

- Smooth weld
- Mass welding
- Precision welding



Vision positioning guarantees precision welding results



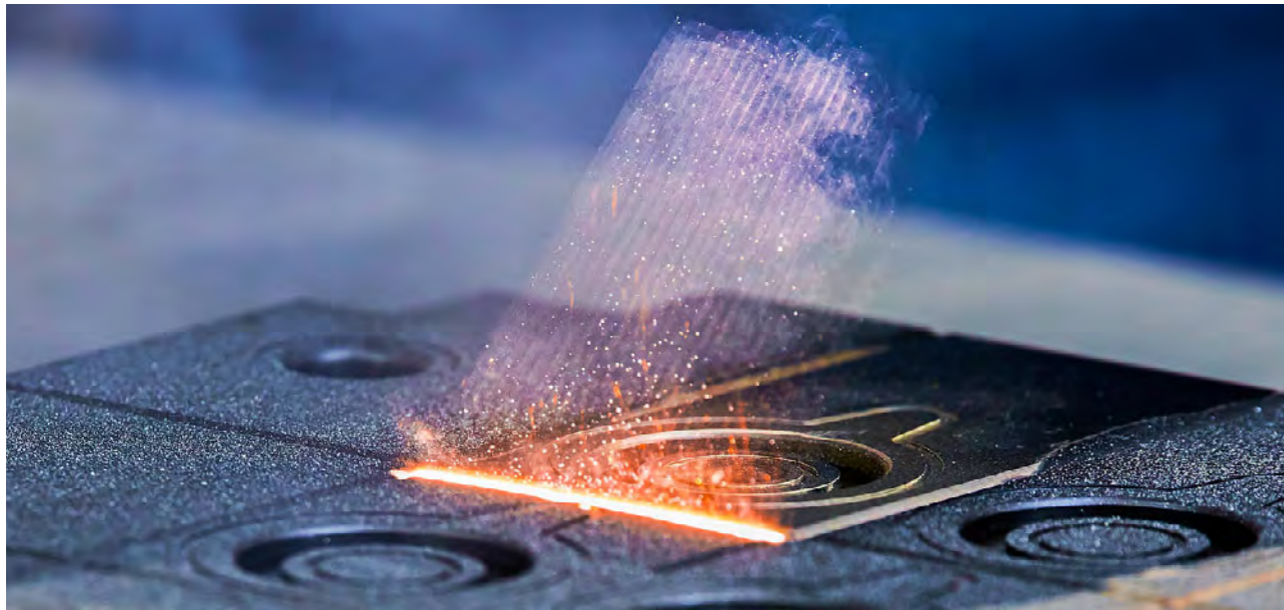
Welding your workpiece at any angle

### Performance advantages

- Easily weld annular welds on stainless steel and carbon steel workpieces;
- Stable welding quality in mass production;
- Freely adjust welding speed to meet different welding needs, simple and easy to operate.

### Machine parameters

Model	MT-W1000P MT-W1500P MT-W2000P MT-W3000P MT-W6000P
Laser Power	1000W-6000W
Laser Head	Automatic type
Laser Wavelength	1080±5nm
Spot Size	φ0.1-5mm
Melting Depth	1-3mm
Output Power Tunability(%)	10-100%



Contactless cleaning with no damage to the substrate

## Performance advantages

- Non-contact cleaning and no damage to the base material;
- Precise cleaning realizes target area cleaning;
- No chemical cleaning agent required, safe and environment-friendly;
- Simple operation and power on to clean;
- Automatic cleaning with hand-held laser head or mechanical arm;
- Precise cleaning with high cleaning efficiency;
- Stable cleaning system hardly requires maintenance.

## Machine parameters

Model	MT-CL200 MT-CL300 MT-CL500 MT-CL1000
Laser Power	200W-1000W
Scan Width	80-120mm
Laser Wavelength	1064nm-1080nm
Spot Size	5m-10m (customizable)
Power Adjustment Range (%)	10-100 (adjustable)

## PULSE LASER CLEANING MACHINE



Non-contact efficient removal of various paint, oil, rust, etc.

- **Precise cleaning**
- **High efficiency**
- **Environment-friendly**

## CONTINUOUS LASER CLEANING MACHINE



Efficiently remove rust, paint, oil, coating, etc.

- Large area cleaning
- Efficient and eco-friendly
- High cost-effectiveness



New Generation Laser Welding Head  
Flexible Laser Cleaning Head



Widely used in metal processing, ships, automotive, rail transportation, mold, etc.

### Performance advantages

- Non-contact cleaning mode and no chemical agents used, which promises efficient and environment-friendly cleaning;
- Easy to operate, no need to disassemble;
- Power on and clean, no consumables required;
- Freely adjust parameters to achieve better cleaning results among multiple cleaning requirements;
- Custom light scan width allows precision cleaning;

### Machine parameters

Model	MT-CL1000	MT-CL1500	MT-CL2000	MT-CL3000
Laser Power	1000W-3000W			
Laser Type	Continuous Wave Laser			
Laser Wavelength	1080nm			
Adjustable Scan Width	10-60mm			
Fiber Length	8-10m			